

Post injection instructions

Monitor yourself for infection in the days following an injection.

***PAIN**

***VISION LOSS**

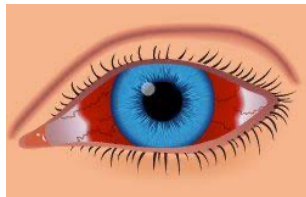
***LIGHT SENSITIVITY**

PLEASE CALL IMMEDIATELY:

1-866-667-8585 OR 1-320-230-8555

Red / Bloody eye:

- It is normal to have bright red blood on the white part of your eye after an injection, caused by the needle.
- Bleeding can be more extensive if you take blood thinners.



Irritated eye:

- It is normal to have some irritation with a burning sensation the day of the injection. This is caused by the sterilizing substance (Betadine) used to kill the bacteria on the surface of the eye.
- Artificial tears can be applied multiple times as needed.

Bubbles and Spots:

- It is normal to see small bubbles or black spots in the bottom part of your vision. They will dissolve in the next couple of days.